



North - East Monsoon – 2022

2022-11-10

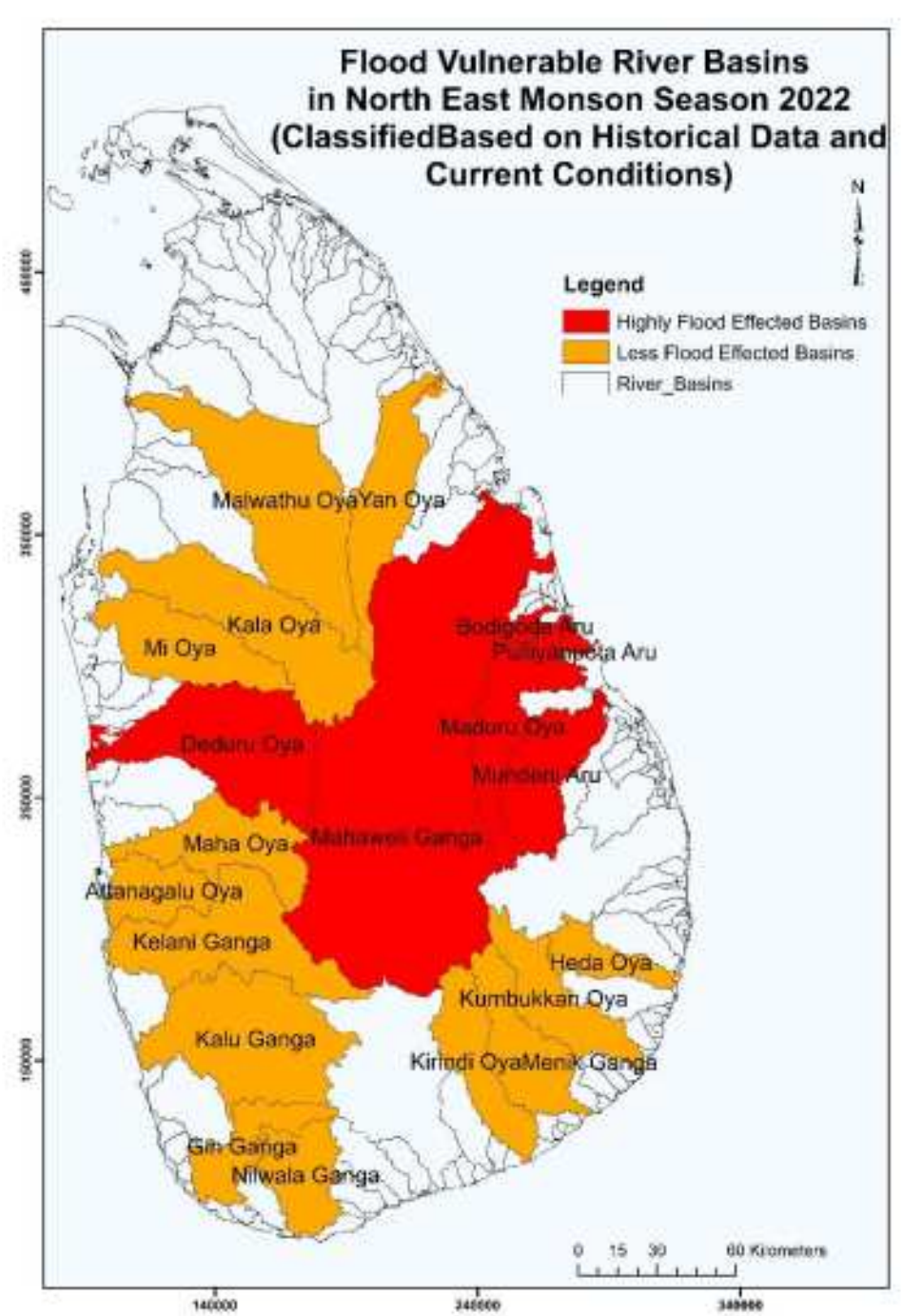
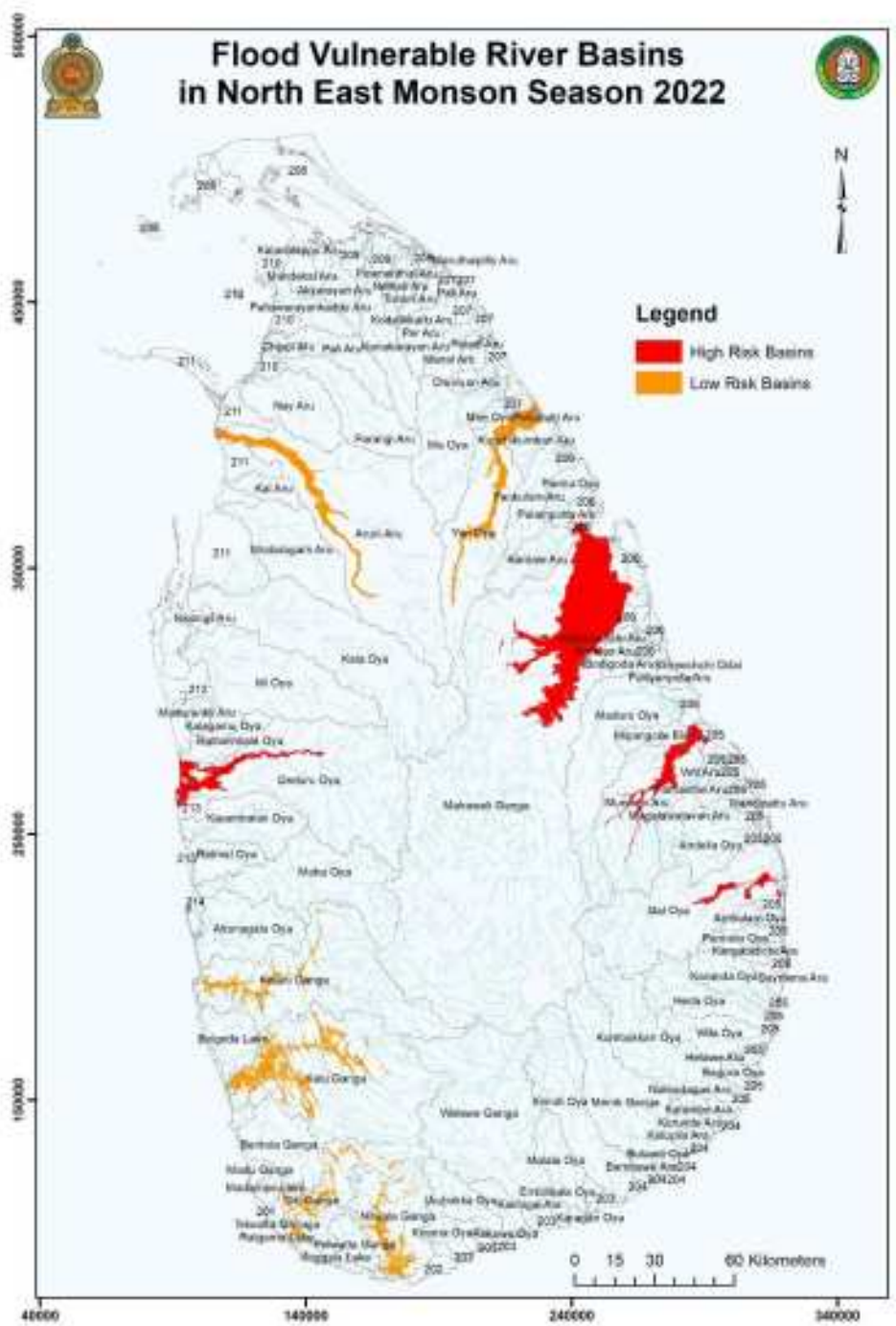
Eng. A. D. S. Iresh

Senior Irrigation Engineer (Hydrology & Disaster Management)

Irrigation Department

Water Storage Situation of Mahaweli System

SCHEME	FSL (MASL)	Storage at FSL (MCM)	LATEST AVAILABLE DATA				
			Date	Elevation (MASL)	Storage (MCM)	Active/Effective	Active/Effective(*) Storage %
						(*)Storage (MCM)	
1. MACRO SYSTEM							
Mahaweli							
GDR (Kotmale)	703.0	170.9	09-Nov	702.8	169.6	150.9	99.20%
Victoria	438.0	723.0	09-Nov	438.0	721.2	687.2	99.70%
Randenigala	232.0	801.5	09-Nov	231.9	798.4	405.0	99.20%
Rantembe	152.0	7.0	09-Nov	152.0	7.0	2.6	100.00%
Bowatenna	251.8	23.5	09-Nov	250.1	16.2	14.0	65.80%
Moragahakanda	185.0	557.9	09-Nov	173.7	286.0	233.4	46.20%
Kaluganga	210.0	248.0	09-Nov	202.6	190.4	122.9	68.10%
Kelani							
Castlereigh	1095.7	48.3	09-Nov	1095.5	47.5	43.8	98.30%
Moussakele	1167.4	123.3	09-Nov	1166.8	118.4	115.4	95.90%
Walawe							
Samanalawewa	460.0	278.0	09-Nov	441.0	135.7	75.7	34.70%
Uda Walawe	88.7	278.2	09-Nov	84.9	167.2	138.9	55.60%
2. IRRIGATION SYSTEM							
Dambulu Oya	162.2	11.7	09-Nov	161.9	10.7	5.3	84.00%
Kandalama	176.2	33.8	09-Nov	174.4	22.5	18.7	62.40%
Kalawewa	129.2	104.0	09-Nov	128.4	83.3	75.5	78.50%
Ulhitiya/Ratkinda	106.7	145.3	09-Nov	105.1	113.0	49.6	60.60%
Maduru Oya	96.0	596.6	09-Nov	91.3	342.4	223.4	46.80%



Irrigation Department's Preparation for Maha Cultivation

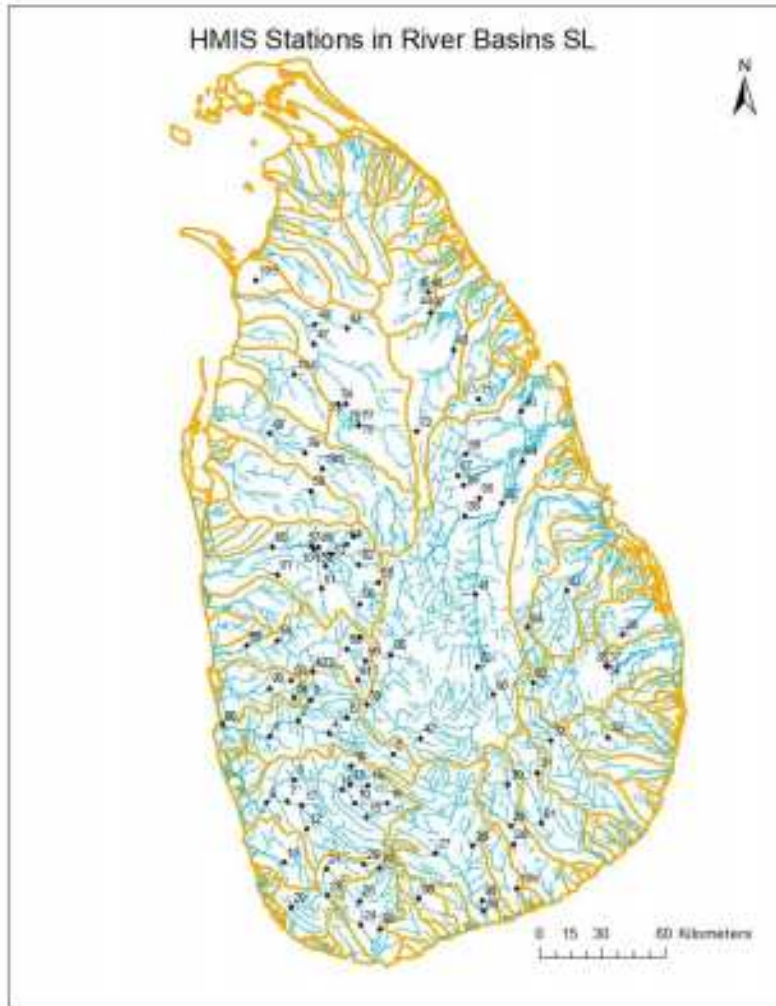
- Water availability is assured for Maha Season for cultivation of **98%** the paddy lands under ID, according to the Seasonal Plan.
- However start of the cultivation is somewhat delayed in general, not due to any water issue but due to some other issues.
- At present **30%** of land extent have been cultivated now.

Areas to be attended more, during North – East Monsoonal Floods

Deduru Oya Basin, Mee Oya Basin	: Kurunagala, Puttalam
Malwathu Oya Basin	: Anuradhapura, Mannar
Mahaweli River Basin	: Polonnaruwa, Trinco
Mundeni Aru Basin	: Baticoloa
Nilwala River Basin	: Matara
Kelani River Basin	: Colombo
Attanagalu oya	: Gampaha
Gin Ganga	: Rathnapura, Kaluthara

Irrigation Department's Preparation for Flood Monitoring and Early Warning

Fully Automated HMIS System



Semi Automated System



- Met Department's Rainfall Observation System
- NBRO's Rainfall Observation System
- Wari Soba Observation System

A close-up photograph of a person in a dark suit, white shirt, and patterned tie. The person is holding a white marker in their right hand and is in the process of writing the words "Thank you" in a white, elegant cursive script. The background is dark, making the white text and the person's hands stand out. The left hand is partially visible at the bottom right, holding a pen.

Thank
you