

Situation Report Summary

Heavy rains, flooding, landslides



Sri Lanka

1800 hours 20-12-2019



**49 Divisions in
12 Districts affected**



**7,025 People
affected**



**1094 Families in
37 safe locations**



**219 Houses
Damaged**



2 deaths

**DISASTER MANAGEMENT CENTER
MINISTRY OF DEFENSE**



DISASTER MANAGEMENT
CENTER



DEPARTMENT OF
IRRIGATION



DEPARTMENT OF METEOROLOGY
SRI LANKA



NATIONAL BUILDING
RESEARCH ORGANISATION



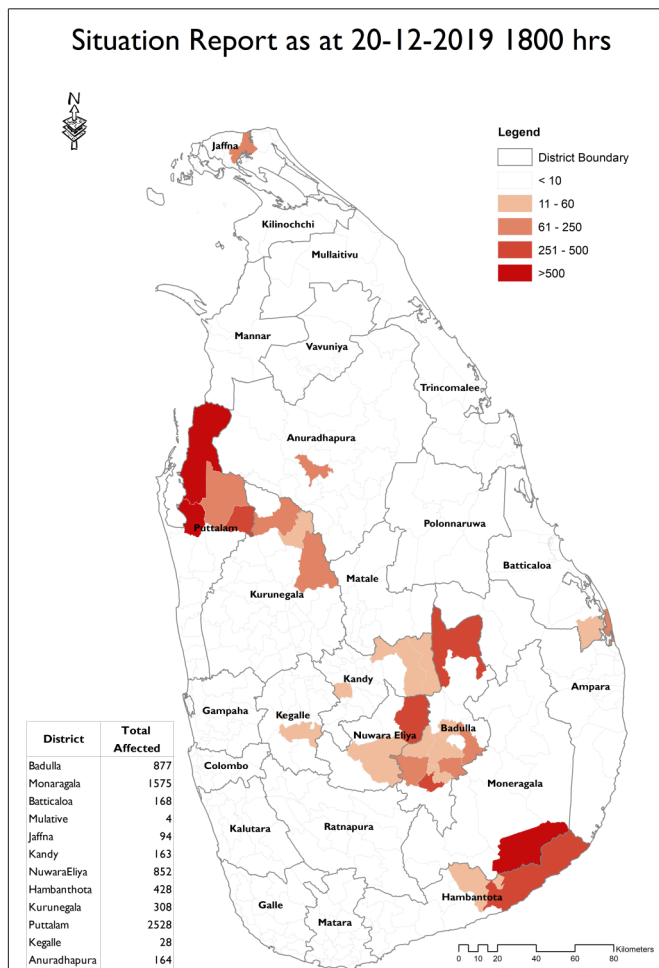
NATIONAL DISASTER RELIEF
SERVICES CENTRE

HIGHLIGHTS

- ◆ Some high risk communities are evacuated in downstream areas in Thabbowa and DeduruOya as river levels are rising, 20 spill gated opened in Thabbowa tank and 14 spill gates opened in Rajanganaya tank.
- ◆ 7,025 people (2,062 families) are reported to have been affected, in ten (12) Districts during the since 18th December 2019. Further, 2 persons are reported to be dead due to floods and cutting failure.
- ◆ As a result of heavy rainfall, strong winds and landslides, 23 houses fully and 219 houses partially, have been damaged mostly in the Nuwara-Eliya, Kandy and Anuradhapura Districts.
- ◆ 3,875 people belonging to 1,094 families, have been evacuated to the 37 locations set up to assist those displaced. Most of these locations are in the Nuwara-Eliya, Badulla, Monaragala and Puttalam districts.
- ◆ LKR 7.35 Mn has allocated by NDRSC for emergency relief purposes in eight affected district secretariats.

CURRENT SITUATION

Due to active cloudiness in the seas areas of the country, many parts have received above 100mm rainfall during past 24hours. Some of roads are inaccessible in Badulla, Polonnaruwa, Hambantota, Puttalam, Anuradhapura and Matale Districts due to inundations and earth slips.



As of now worst affected areas are Wanathavilluwa & Nawagaththegama in Puttalam; Kataragama in Monaragala; Mahiyangana & Haputale in Badulla, Walapane in Nuwaraeliya Districts.

Also People evacuated in Polonnaruwa District Weilikanda, Manampitiya, Dimbulagala, Pimburaththewa DS Divisions, and in Anuradhapura District Galnewa, Ipalogama, Thalawa, Thambuththegama DS Divisions

At the end of 1800hrs on 20th December, very heavy rainfall were recorded in 512mm in Moragahakanda (Matale), 226mm in Diyabeduma, Polonnaruwa, 283mm in Hakwa-

FIGURE 01: Affected area mapping

Reservoir Status (reservoirs which are spilling at present)

| District | Reservoir Name |
|--------------|------------------------|
| Anuradhapura | Nuwara Wewa |
| Anuradhapura | Nachchaduwa |
| Anuradhapura | Manankattiya |
| Anuradhapura | Yan Oya |
| Badulla | Kande Ela |
| Badulla | Sorabora |
| Batticaloa | Unnichchai |
| Batticaloa | Rugam |
| Hambantota | Tissawewa |
| Hambantota | Lunugamwehera |
| Hambantota | Badagiriya |
| Hambantota | Yodawewa |
| Kurunegala | Usgala Siyabalangamuwa |
| Kurunegala | Ambakolawewa |
| Matale | Nalanda |
| Matale | Dewahuwa |
| Matara | Ellewela |
| Monaragala | Ethimale |
| Puttalam | Tabbowa |
| Puttalam | Inginimitiya |
| Trincomalee | Wan Ela |
| Trincomalee | Mahadivul Wewa |

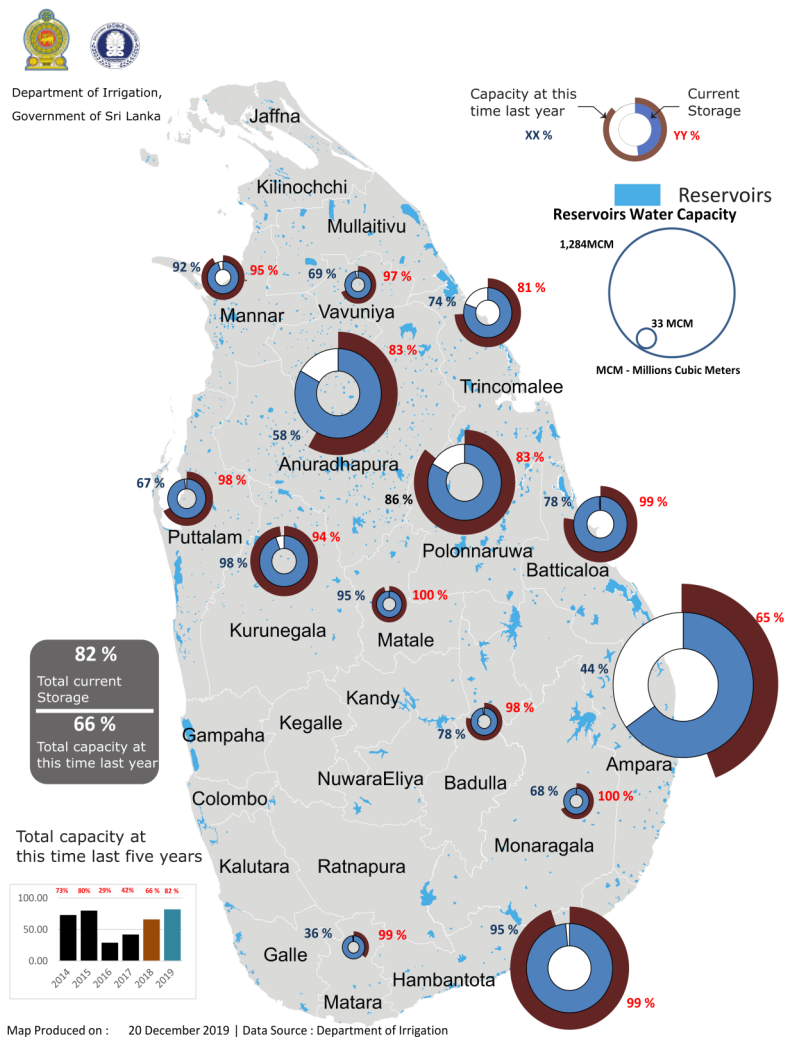


Table 01: reservoirs which are spilling at present

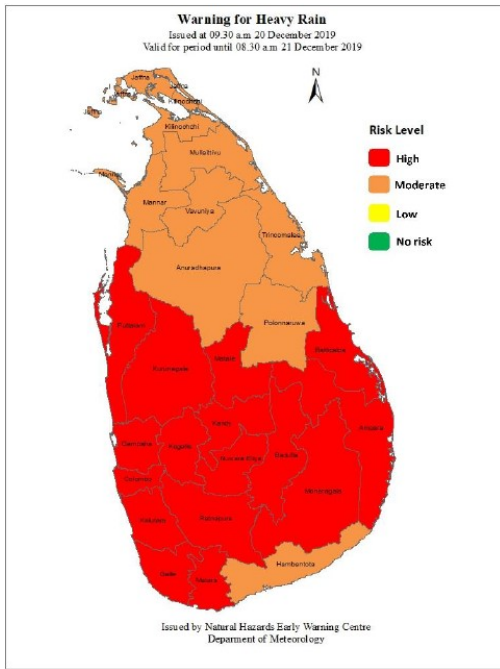
FIGURE 02: Reservoir levels

Due to heavy rainfall over past 24 hours, many rivers are rising at this moment. Kumbukkan oya at Nakkala shows minor flooding; Hada-Oya at Siyambalanduwa at alert level; Mahaweli Ganga at Manampitiya and Thaldena shows minor flooding.

| District | Station | Rainfall Recorded in last 24hrs (mm) | | | |
|--------------|--------------------|--------------------------------------|------------|-----------------------|-----------------------|
| | | 2019.12.18 | 2019.12.19 | 2019.12.20 (0800 hrs) | 2019.12.20 (1700 hrs) |
| Matale | Moragahakanda | 108 | 93 | | 436 |
| | Bowathenna | | 100.2 | 124 | |
| Polonnaruwa | Diyabeduma | 93 | 52 | | 226 |
| | MaduruOya | 59 | | 102 | |
| | Morahagakanda | | | 199 | |
| Hambanthota | Badagiriya | | 74 | 85 | 145 |
| Kurunegala | Hakwatunna | 58 | 30.2 | | 283 |
| Badulla | Ulhitiya Reservoir | 42 | 93.3 | 111 | |
| | Palgathenna | | 54.75 | 76 | 119 |
| | Uwa Wellassa | | | 65 | 112 |
| Monaragala | Nakkala | | 42 | 62 | 168 |
| | Bibila | | 49 | 90 | 116 |
| | Buththala | | | | 133 |
| Nuwara Eliya | Rantembe | | 46 | | 120 |

Table 02: Rainfall recorded from Department of Meterology, Department of Irrigation, National Building Research Organization

FORECAST AND WARNING



Department of Meteorology: Due to an active North-east monsoon conditions, showery condition over the island, particularly in Northern, Eastern and Uva provinces and in Polonnaruwa district is expected to enhance further Eastern, Uva, North-Central and Northern provinces is likely to enhance.

Fairly heavy showers of about (75-100) mm are likely in south-western districts. However, heavy rains may decreased from tomorrow onwards.

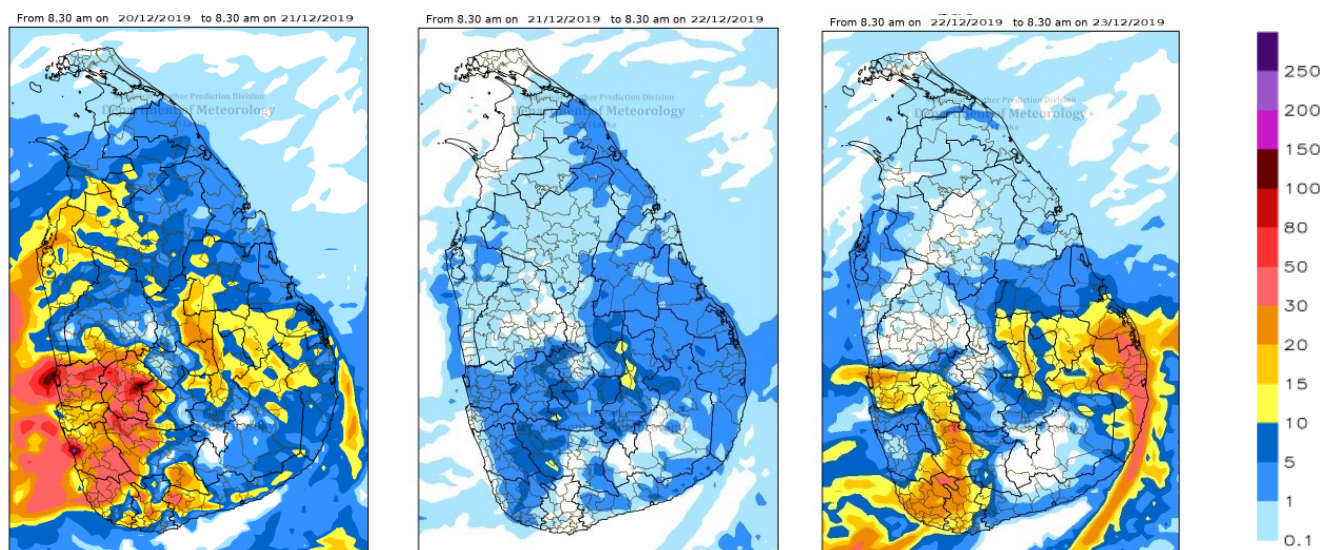
National Building Research Organization: Due to heavy rainfalls NBRO has issued landslide warnins in 3 different stages: Alert, Watch and Warning. Level 3 warning issued for Laggala, Yatawatta, Naula in Matale districts, Ududumbara in Kandy, Badulla, Bandarawela, Welimada in Nuwara-Eliya Districts.

FIGURE 01: Weather forecast for next 24hours at 1800 Hrs

| District | Level 1 - Watchful | Level 2 - Alert | Level 3 - Evacuation |
|--------------|--------------------|---|---|
| Matale | | Ambanganga Korale Ukuwela Pallepola Matale | Laggala Pallegama Yatawatta Naula Wilgamuwa, Rattota |
| Kandy | Phathahewaheta | | Ududumbara Medadumbara |
| Nuwara Eliya | Nuwara Eliya | Hanguranketha | Walapane |
| Badulla | | | Badulla Bandarawela Welimada Hali-Ela Uvaparanagama Ella Passara Lunugala Haputale Soranathota |
| Monaragala | | Badalkumbura | |
| Rathnapura | | Balangoda, Imbulpe | |

TABLE 03: Landslide warning issued by NBRO 1600HRS, 20 Dec 2019

FIGURE 01: 3-day Weather forecast for next 24hours at 1630 Hrs 20



Numerical weather predictions by the Department of Meteorology, shows a reduction of rainfall from tomorrow onwards.

DISASTER RESPONSE AND RELIEF

The secretary to the ministry of defense directed to the Sri Lanka Army, Navy, Air force, Police and Civil Defense department to be standby to cope up with any unexpected situations due to prevailing bad weather in the country and military troops and police are continuously assisting affected communities in various locations.

National Disaster Relief Services Center has allocated LKR 7.35 million for relief services for Kandy, Anuradhapura, Monaragala, Kurunegala, Puttalam, Badulla, Ampara and Hambantota districts.

As at now about 3,875 affected people belong to 1,094 families were relocated in 37 safety centers in 5 Districts.

- Farmers were rescued in Siyambalanduwa in Monaragala districts by Navy.
- 15 Tourists in Yala forest were rescued and taken to safer areas with the support of Military.
- One person is missing in Aliyadiwembu in Ampara due to a water current.
- 3 foreigners were rescued in a collapsed cottage between Ella & Rock-Ella and moved to a hospital with the support of Military and police

| District | Area | Remarks |
|--------------|--|-------------------------------------|
| Puttalam | Daduruoya downstream is inundated | 6 gates of Deduruoya tank is opened |
| Polonnaruwa | Somawathiya road is closed in Sungawila. People evacuated in Weilikanda, Manampitiya, Dimbulagala, Pimburaththewa | Due to overflow of Mahaweli river |
| Badulla | Haldummulla Kirawanagama road is blocked. Bibile Lunugala road in impassible until 6 am tomorrow | Road is clearing at the moment |
| Kandy | Ududumbara Meemure road is inaccessible due | |
| Ampara | Bridge is damaged in Panama Uhantha road | Due to heavy rains |
| Anuradhapura | People evacuated in Galnewa, Ipalogama, Thalawa, Thambuththegama | Due to spilling of kalawewa |

TABLE 04: Special incidents reported

Also military troops and Police personnel are assisting to public administration officials for emergency relief efforts together with Disaster Management Centre and National Relief Services Centre. Below picture shows road block at 6th mile-post in Badulla Passara road.



FIGURE 05: Road block due to earth slip in Badulla

This report was produced with the technical support of World Food Programme (WFP)



Emergency Contact Information

| Responsible Agency/Unit | Officer | Contact | Email |
|--------------------------------------|----------------------|--|-----------------------------------|
| Response Operation Coordination- DMC | Director- Emergency | 0773957903 | direoc@dmc.gov.lk |
| National Disaster Relief Services | Director | 0773550134 | iraj.chaminda.pathiraja@gmail.com |
| Emergency Operation Centre DMC | Duty Officer | 0773957900 0112670002 0702117117 | eocdmc@dmc.gov.lk |
| Military Resources Mobilization | Military Coordinator | 0772095328 | militarycoordinator@dmc.gov.lk |
| Emergency Call Centre | Duty Officer | 117 | info@dmc.gov.lk |

Checked by:

Brigadier W.A. Ariyaratne RWP RSP
Director - Emergency Operations
Disaster Management Centre

Approved by:

Mr. W.A. Dharmasiri
Director General
Disaster Management Centre